

*Note: These CAD drawings are recorded on, or can be transmitted as, electronic media. They are therefore subject to undetectable alteration or erasure, either intentional or unintentional, due to, among other causes: transmission, conversion, media degradation, software error, or human alteration. Accordingly, Cummings Properties shall not be held liable for any claims, losses, damages, or costs arising out of any such use of these CAD documents.



444 Washington Street, Suite 503, Woburn, MA

Cummings Properties

200 West Cummings Park, Woburn, MA. 781-935-8000

LSF: 1,015

Drawn: JN

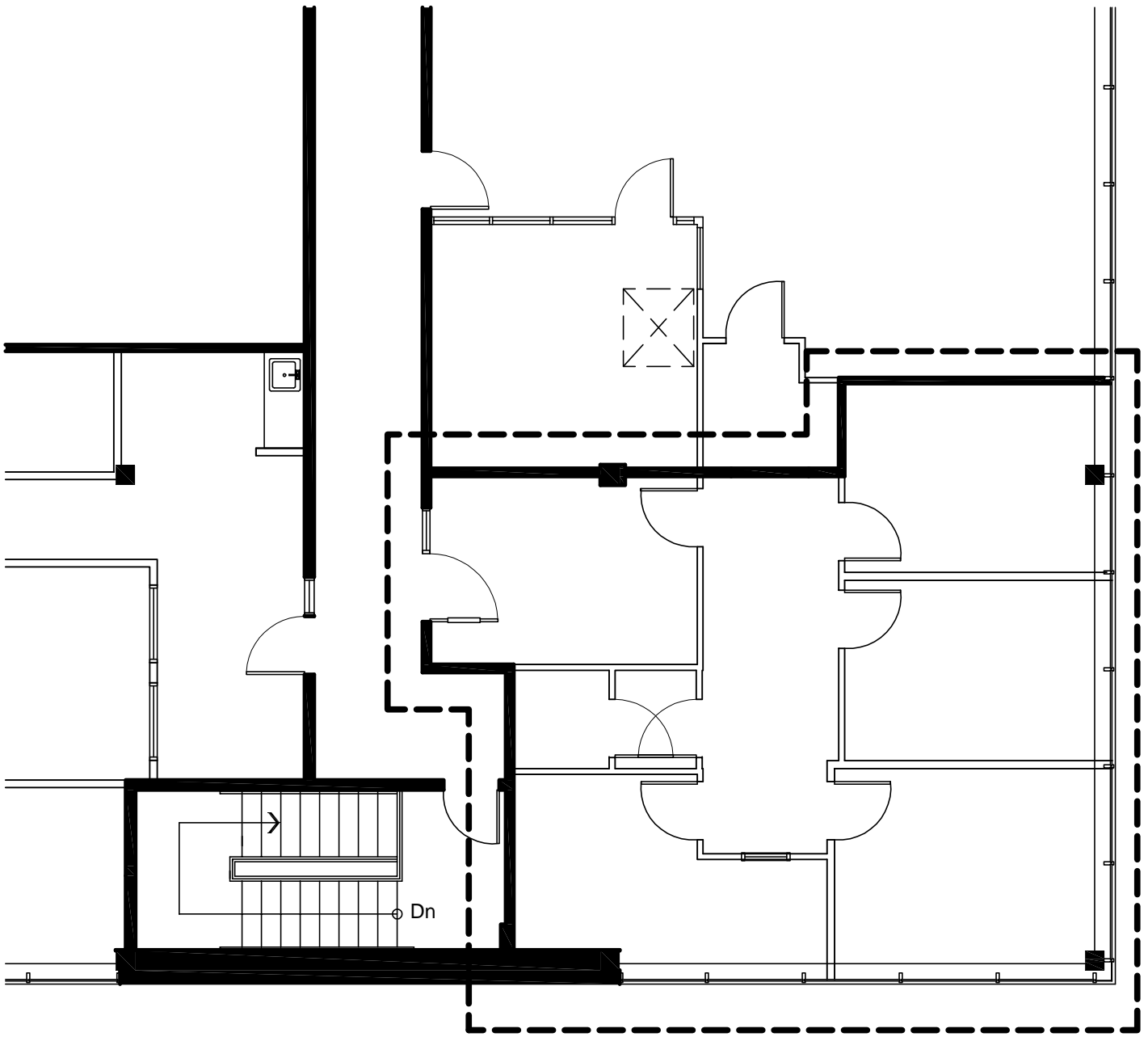
Scale: * 3/32"=1'-0"

Checked:

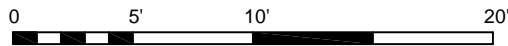
Date: 2/20/07

Revised: 6/8/09

- All dimensions are approximate.
- CPL standard construction unless otherwise noted.
- All finishes to remain as is unless otherwise noted.
- Furnishings are shown for illustrative purposes only.
- No representation is made as to the suitability of this design for lessee's use or occupancy.



*Note: These CAD drawings are recorded on, or can be transmitted as, electronic media. They are therefore subject to undetectable alteration or erasure, either intentional or unintentional, due to, among other causes: transmission, conversion, media degradation, software error, or human alteration. Accordingly, Cummings Properties shall not be held liable for any claims, losses, damages, or costs arising out of any such use of these CAD documents.



444 Washington Street, Suite 504, Woburn, MA

Cummings Properties
200 West Cummings Park, Woburn, MA. 781-935-8000

LSF: 1,175	Scale: * 1/8"=1'-0"	Date: 07/06/06
Drawn: KAU	Checked:	Revised: 11/14/08

- All dimensions are approximate.
- CPL standard construction unless otherwise noted.
- All finishes to remain as is unless otherwise noted.
- Furnishings are shown for illustrative purposes only.
- No representation is made as to the suitability of this design for lessee's use or occupancy.